

# ROLLED BEAM INTERMEDIATE DIAPHRAGM DETAILS (SHEET 1 OF 2)

ISSUED: 2009

PLATE  
3.9-17

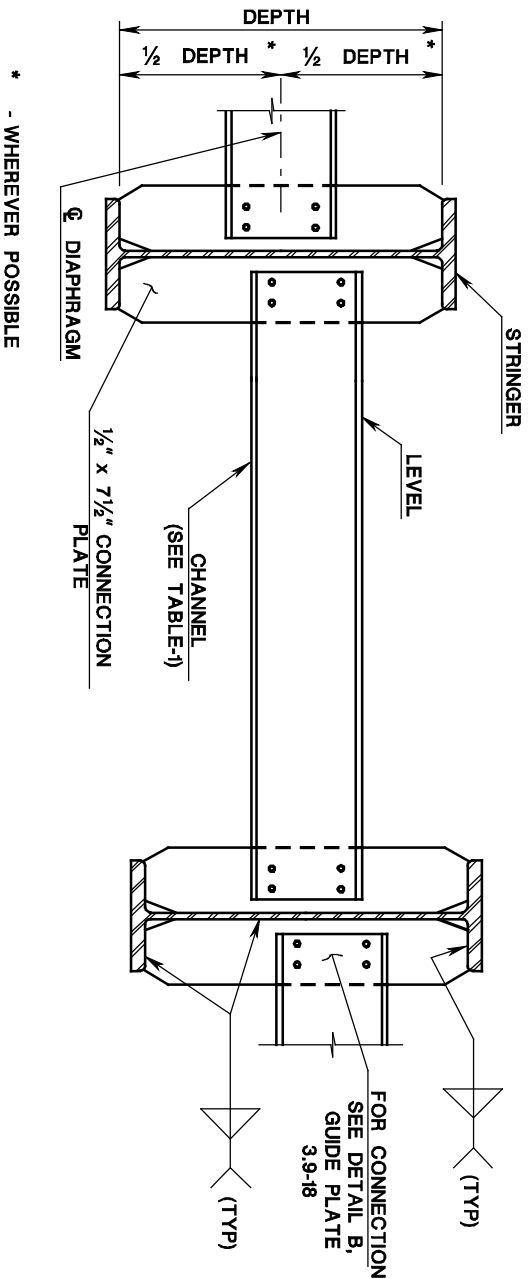
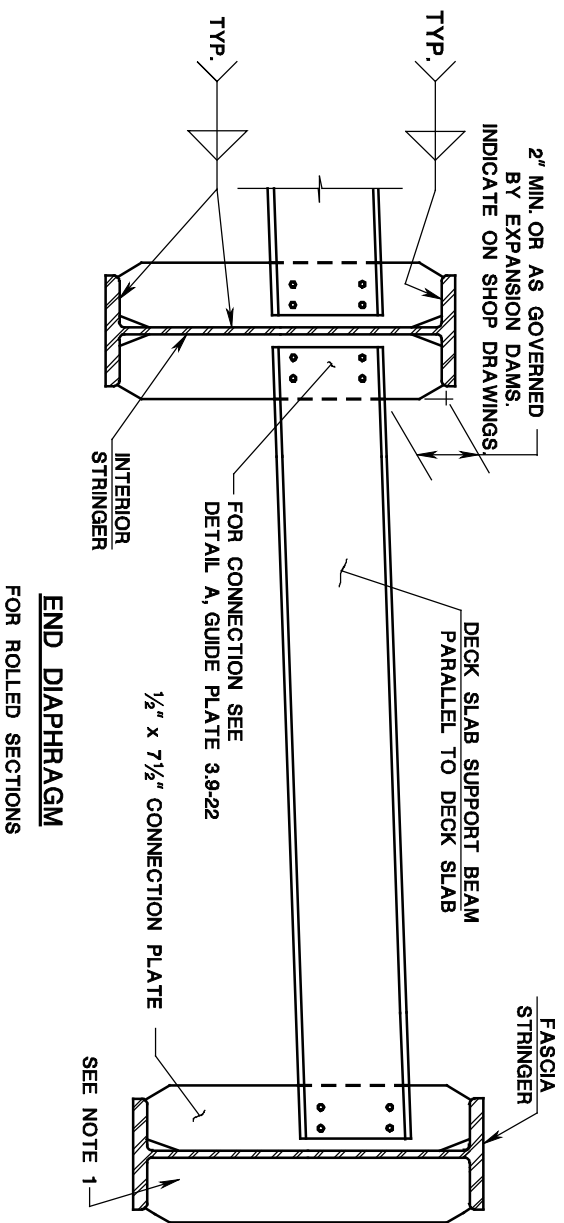


TABLE-1

STRINGER SIZE	DIAPHRAGM SIZE NO. OF BOLTS
≥ 2'-3" DEPTH	C 15x33 9
UP TO 2'-0" DEPTH	C 12x25 6

NOTES:

1. PROVIDE CONNECTION PLATE ON THE OUTSIDE FACE ALSO FOR TWO OR THREE GIRDER SYSTEMS.
2. INTERMEDIATE DIAPHRAGMS DETAILED ON GUIDE PLATE 3.9-11 ARE AN ACCEPTABLE ALTERNATE.